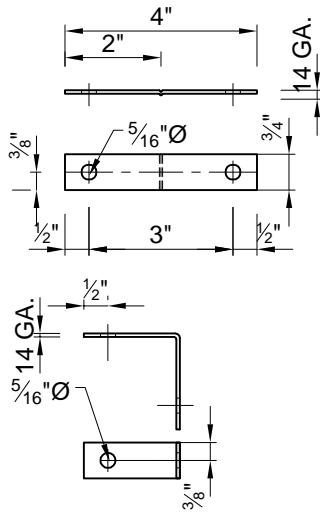


"Expansion Joint Chart"	
-- temperature (F°) --	-- required gap --
120°	0"
107.5°	1/16"
95°	1/8"
82.5°	3/16"
70°	1/4"
57.5°	5/16"
45°	3/8"
32.5°	7/16"
20°	1/2"
7.5°	9/16"
(-)5°	5/8"

Expansion joint spacing not to exceed 20'-0"

#### LEGEND

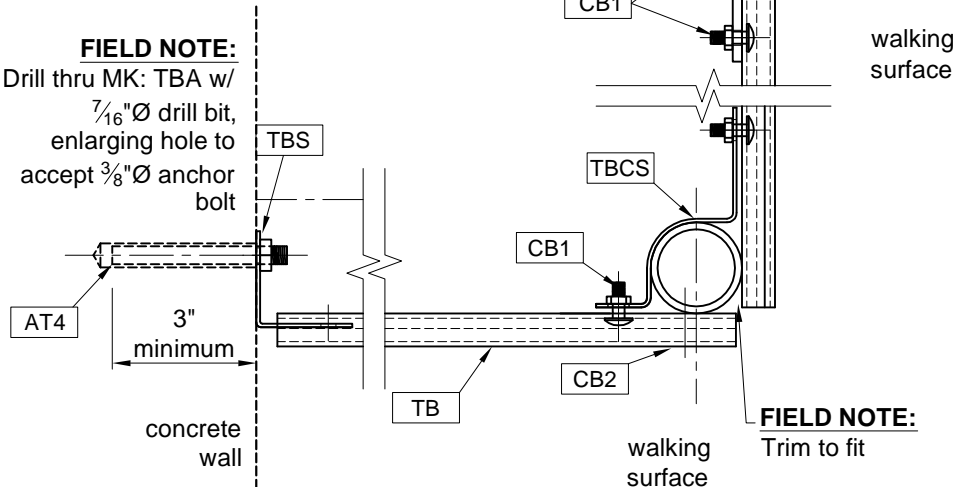
TB = Toeboard as supplied (ALUM)  
TBCS = Toeboard Clamp (SS)  
TBS = Toeboard Splice (SS)  
CB1 = Carriage Bolt, 1/4"Ø x 3/4"  
w/ Nylon-Insert Locknut (SS)  
CB2 = Bolt, 1/4"Ø x 1 1/4"  
w/ Nut (SS)  
AT4 = Threaded Rod, 3/8"Ø x 4" w/ Nut (SS)



Field drill (ONE) 7/16"Ø hole  
thru toeboard for (ONE) CB2

DETAIL of  
MK: TBS

**FIELD NOTE:**  
Drill thru MK: TBA w/  
7/16"Ø drill bit,  
enlarging hole to  
accept 3/8"Ø anchor  
bolt



**FIELD NOTE:**  
Trim to fit

### TOE BOARD ASSEMBLY FOR CUP, EMBED & CORNER INSIDE CORNER, 90° OUTSIDE CORNER, 90° WALL TERMINATION

*C & C Metals, Inc.*

2523 Northline Road, Conroe, Texas 77384  
Phone (281) 907-0005 Fax (281) 907-0462  
CCMETALS@CONSOLIDATED.NET

LAST REV. DATE	3/21/08	SHOP ORDER	0001
DETAIL: Toe Board Assembly (TBC) - Short			SHT N°
PROJECT: #####			35