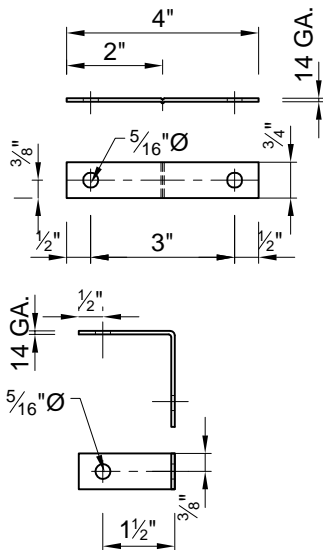


"Expansion Joint Chart"	
-- temperature (F°) --	-- required gap --
120°	0"
107.5°	1/16"
95°	1/8"
82.5°	3/16"
70°	1/4"
57.5°	5/16"
45°	3/8"
32.5°	7/16"
20°	1/2"
7.5°	9/16"
(-)5°	5/8"

Expansion joint spacing not to exceed 20'-0"

LEGEND

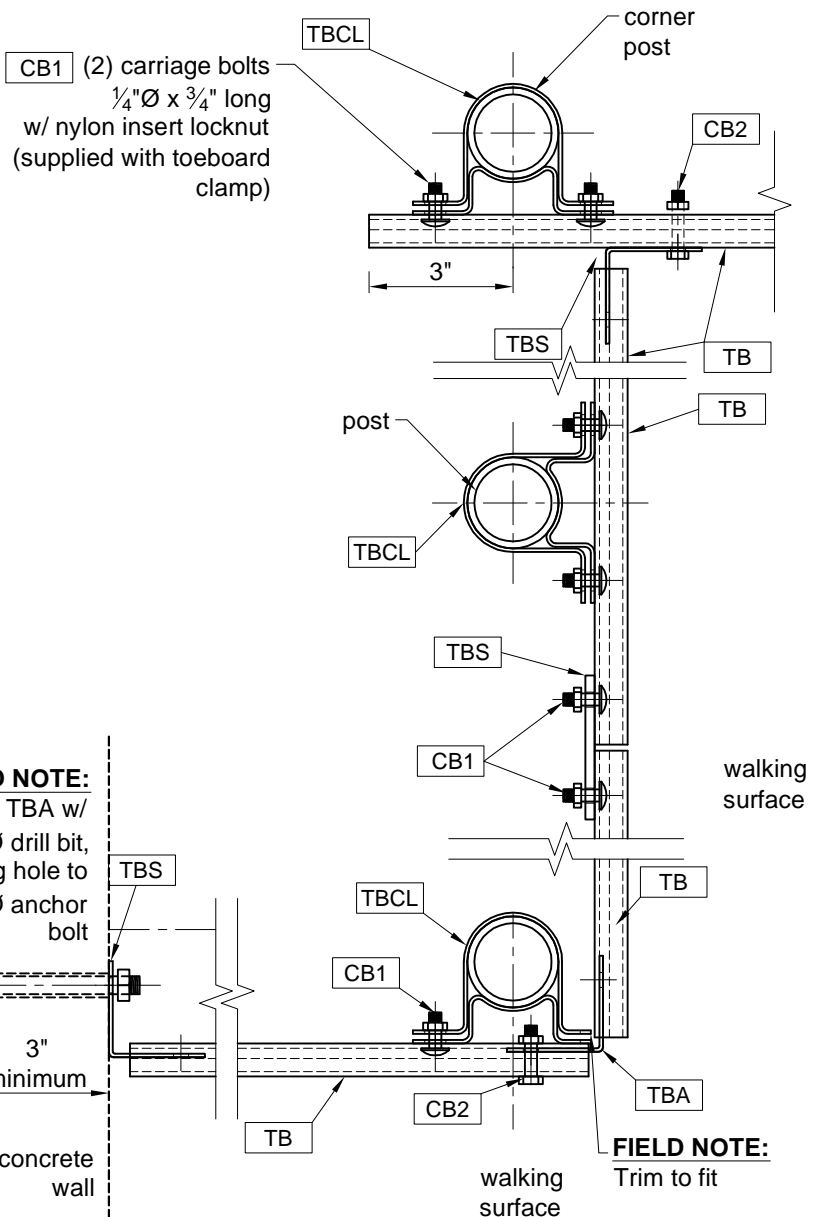
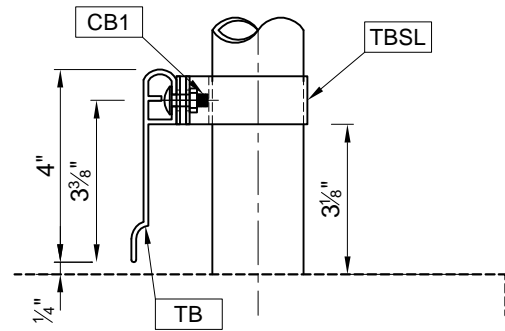
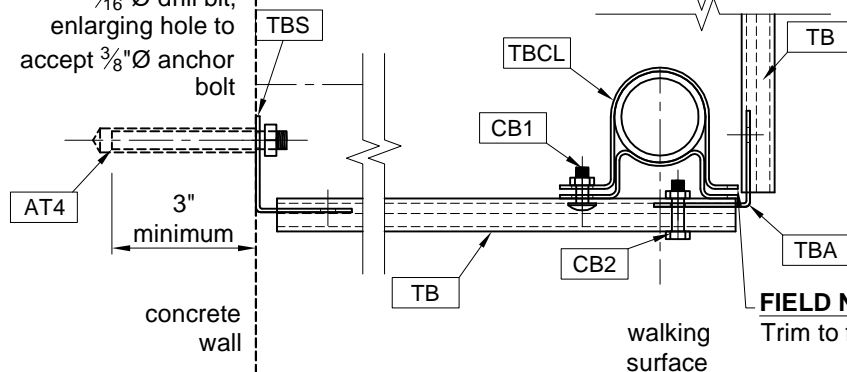
TB = Toeboard as supplied (ALUM)
 TBCL = Toeboard Clamp (SS)
 TBS = Toeboard Splice (SS)
 CB1 = Carriage Bolt, 1/4"Ø x 3/4"
 w/ Nylon-Insert Locknut (SS)
 CB2 = Bolt, 1/4"Ø x 1 1/4"
 w/ Nut (SS)
 AT4 = Threaded Rod, 3/8"Ø x 4" w/ Nut (SS)



Field drill (ONE) 7/16"Ø hole
 thru toeboard for (ONE) CB2

DETAIL of
 MK: TBS

FIELD NOTE:
 Drill thru MK: TBA w/
 7/16"Ø drill bit,
 enlarging hole to
 accept 3/8"Ø anchor
 bolt



FIELD NOTE:
 Trim to fit

TOE BOARD ASSEMBLY FOR 5 X 5 BASE MOUNT INSIDE CORNER, 90° OUTSIDE CORNER, 90° WALL TERMINATION

C & C Metals, Inc.

2523 Northline Road, Conroe, Texas 77384
 Phone (281) 907-0005 Fax (281) 907-0462
 CCMETALS@CONSOLIDATED.NET

LAST REV. DATE	5/21/08	SHOP ORDER	0001
DETAIL: Toe Board Assembly (TBC) - Long			SHT N°
PROJECT: #####			34